

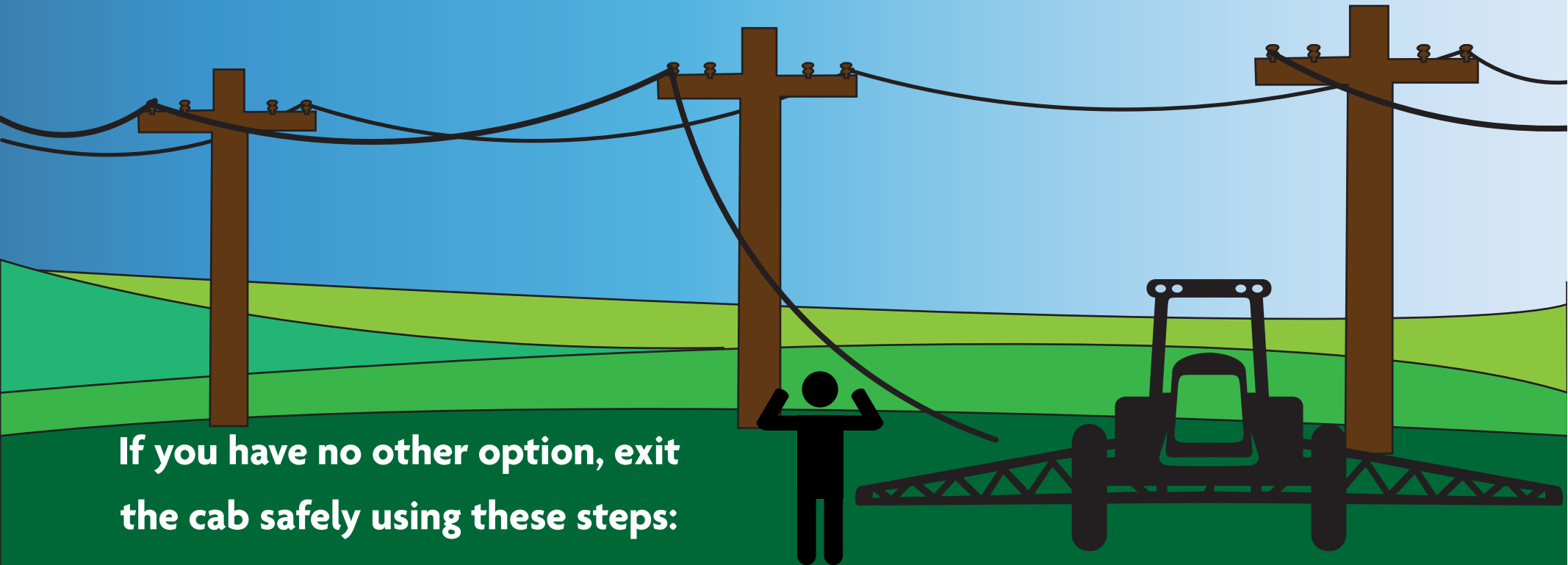
Be Sure to Safely Operate Vehicles and Machinery Around Power Lines

LOOK UP AND LIVE

Almost half of all power line contacts involve large equipment. Take time to S.T.O.P. (Stop, Think, Observe, and Proceed) while noting the location of all power lines, especially overhead wires. Remember to look up!

KEEP A SAFE DISTANCE

If you see a downed power line, stay back at least 33-feet. If you contact a line in a vehicle, do not get out. Call Southern Pioneer Electric immediately at 800-670-4381.



If you have no other option, exit the cab safely using these steps:

When exiting, make sure there are no wires in your path.



Stand in the doorway, cross your arms and put your feet together.



Jump as far away from the vehicle as possible, land with your feet together while maintaining balance. Make sure not to fall!



DO NOT touch the vehicle!



Keep your arms crossed and feet together while hopping at least 33 feet to safety.



Slowly slide your feet apart and if you feel tingling, slowly slide your feet back together and hop farther away. Repeat until you do not feel tingling.